

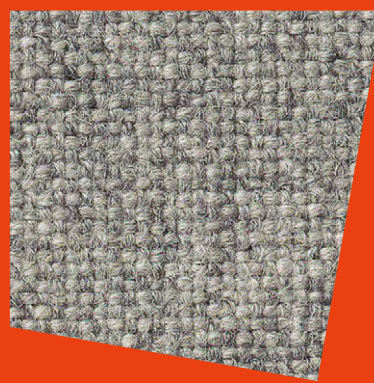
# PREMIUM 42

**Stoffe** Raumsysteme und  
modulare Loungesysteme

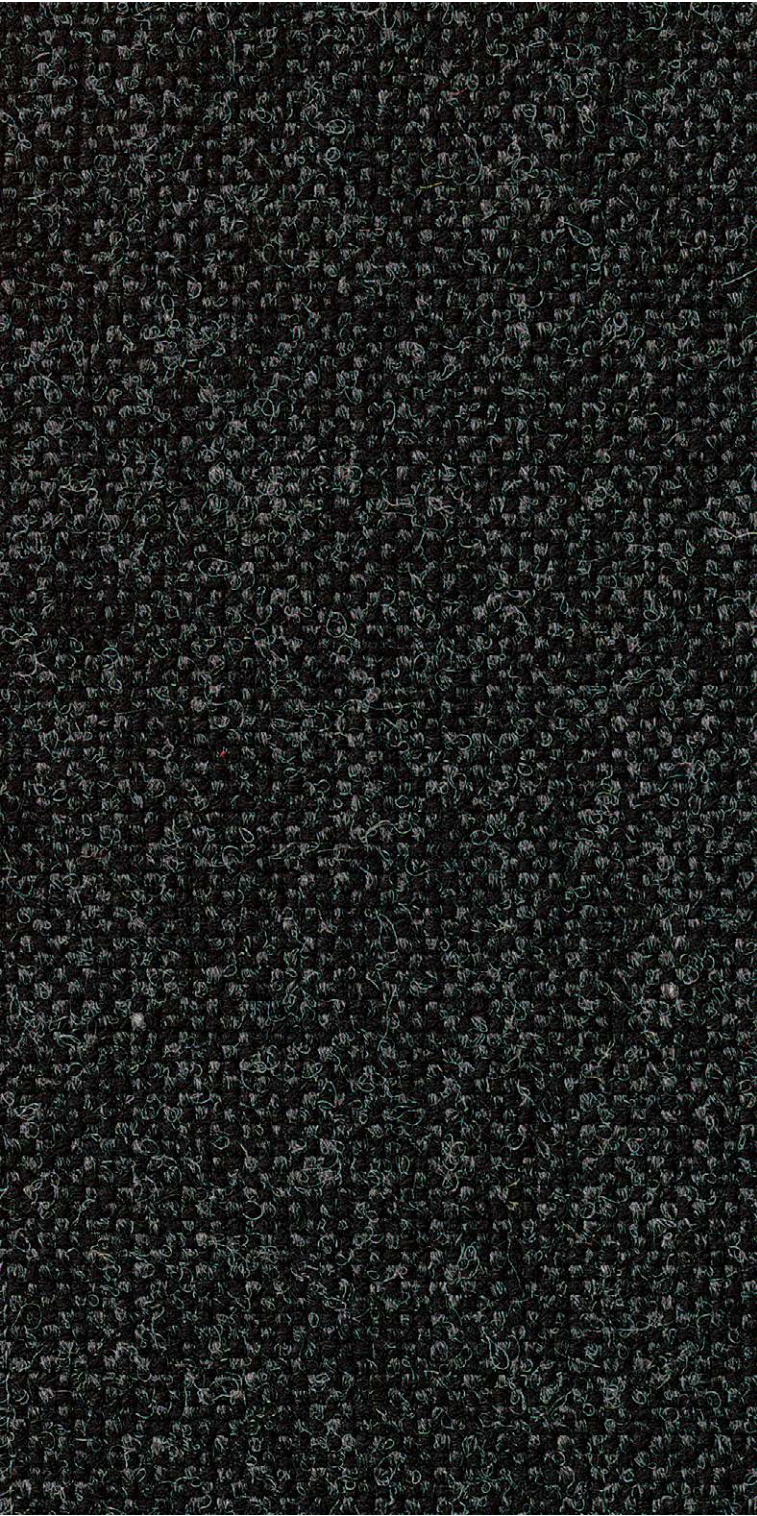
**Fabrics** Room systems and  
modular lounge systems

**Tissus** Cloisons toutes portantes  
et systèmes lounge modulaires

**Stoffen** Wandsystemen  
en modulaire loungesystemen





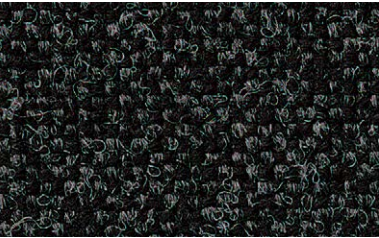


**Hallingdal 65, Kvadrat**  
**70 % Schurwolle, 30 % Viscose**  
Breite 130 cm, Längengewicht ca. 795 g/lfd. M.  
Scheuerfestigkeit über 100.000 Scheuertouren  
nach Martindale  
Brandverhalten getestet nach DIN EN 1021,  
Teil 1 und 2  
EU Ecolabel  
Sound absorption certificate

**Hallingdal 65, Kvadrat**  
**70 % pure wool, 30 % viscose**  
130 cm wide, approx. weight 795 g/m length  
Wear resistance tested to over 100.000 rub  
cycles on the Martindale test  
Flammability tested to DIN EN 1021,  
part 1 and 2  
EU Ecolabel  
Sound absorption certificate

**Hallingdal 65, Kvadrat**  
**70 % laine vierge 30 % viscose**  
Largeur 130 cm, poids au mètre linéaire env. 795 g  
Résistance à l'usure : plus de 100.000 tours  
Martindale  
Comportement au feu testé selon DIN EN 1021,  
partie 1 et 2  
écolabel UE  
Sound absorption certificate

**Hallingdal 65, Kvadrat**  
**70 % scheerwol, 30 % viscose**  
130 cm breed, gewicht ca. 795 per  
strekken meter  
Slijtvastheid 100.000 toeren Martindale  
Gestest op brandwerendheid volgens  
DIN EN 1021, deel 1 en 2  
Voldoet aan het Europees ecolabel  
Sound absorption certificate



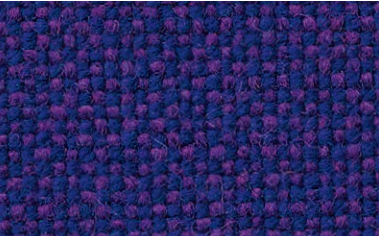
**62**  
schwarz / black / noir / zwart



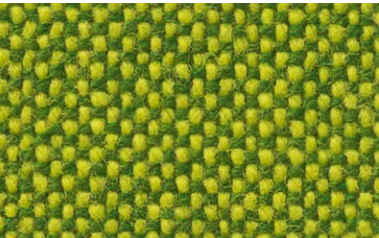
**71**  
gelb / yellow / jaune / geel



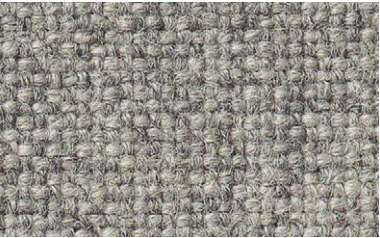
**67**  
brombeer / blackberry / mûre /  
bramen



**41**  
blauviolett / blue violet /  
bleu violet / blauwpaars



**31**  
hellgrün / light green /  
vert clair / lichtgroen



**53**  
hellgrau / light grey / gris clair /  
lichtgrijs



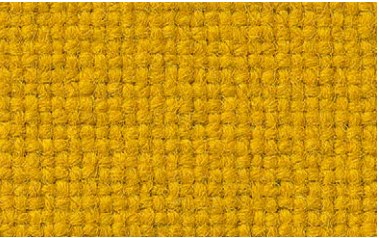
**29**  
dunkelbeige / dark beige /  
beige foncé / donkerbeige



**60**  
rot / red / rouge / rood



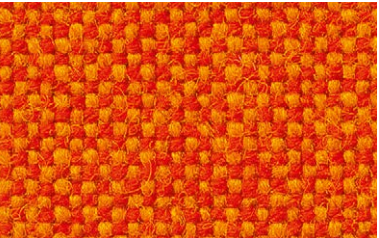
**43**  
hellblau / light blue / bleu clair /  
lichtblauw



**70**  
ocker / ochre / ocre / oker



**25**  
beige / beige / beige / beige



**82**  
orange / orange / orange / oranje



**33**  
dunkelgrün / dark green /  
vert foncé / donkergroen



